

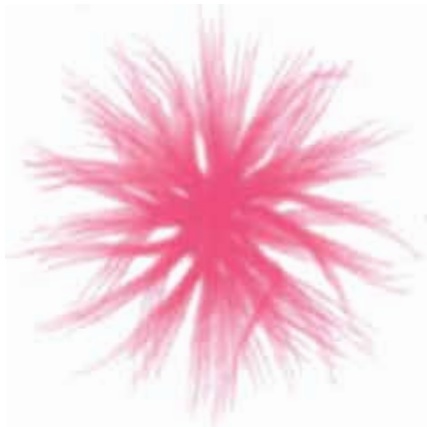
Bionic Botanic

Botanical engineering, scientific and virtual elaboration of nature.
Bionic design, carnivorous and mechanical plants.
Genetic manipulations/GMO.
Technological greenhouses, digital flora.
Celebrating science: chemical and biological universes.
Microscopic visions, lab tests,
slides and contrast liquids.
Cells and molecules, fantastical artificial visions.
Nature in a test tube.
Fluid lines, macroscopic shapes.
Treated textures, rubbery and shiny looks, wet-look effects.
3D reliefs and surfaces.
Sequin embroidery like cellular agglomerates.
Shaded and blurred prints.
Acid and neon colours: violet, fuchsia, red, chemical green and blue.

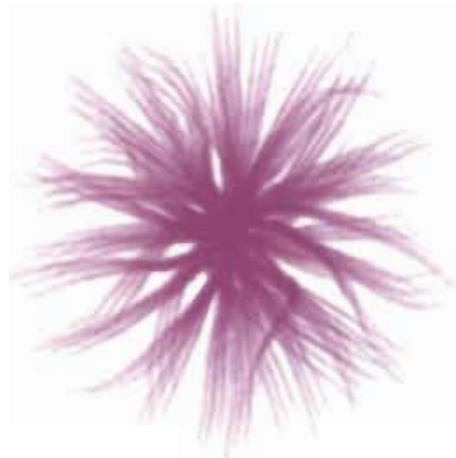
Ingegneria botanica, elaborazione scientifica e virtuale della natura.
Bionic design, piante carnivore e meccaniche.
Manipolazioni genetiche/OGM.
Serre tecnologiche, flora digitale.
Celebrare la scienza: universi chimici e biologici.
Visioni microscopiche, esperimenti in laboratorio,
vetrini e liquidi di contrasto.
Cellule e molecole, fantastiche visioni artificiali.
Natura in provetta.
Linee fluide, forme macroscopiche.
Texture trattate, aspetti gommosi e lucidi, effetti bagnati.
Rilievi e superfici tridimensionali.
Ricami di paillette come agglomerati cellulari.
Stampe sfumate e sfuocate.
Colori acidi e al neon: viola, fucsia, rosso, verde e blu chimici.







18-1755 TPX
mutant pink



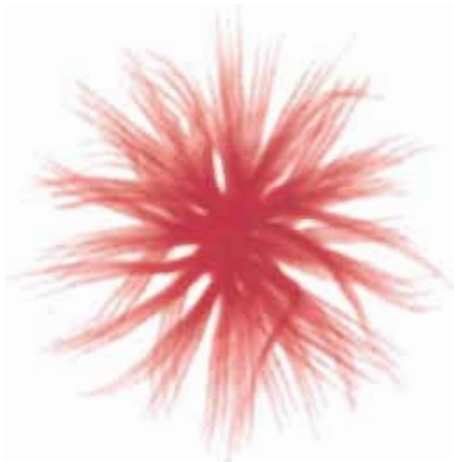
18-1720 TPX
cellular



13-0117 TPX
nucleus



14-0446 TPX
digital flora



18-1550 TPX
platelet

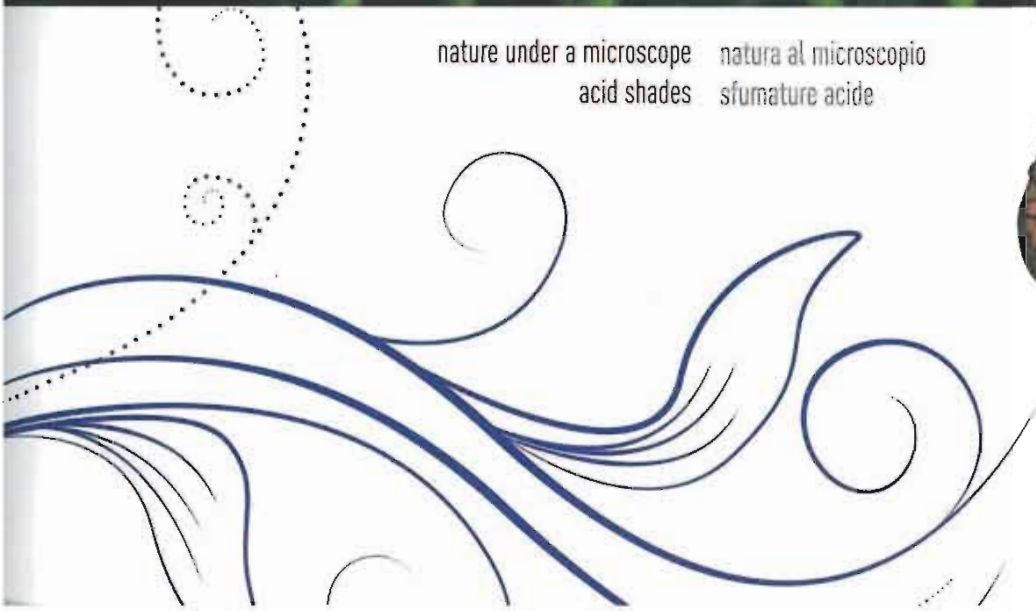


18-3949 TPX
organic blue





nature under a microscope natura al microscopio
acid shades sfumature acide

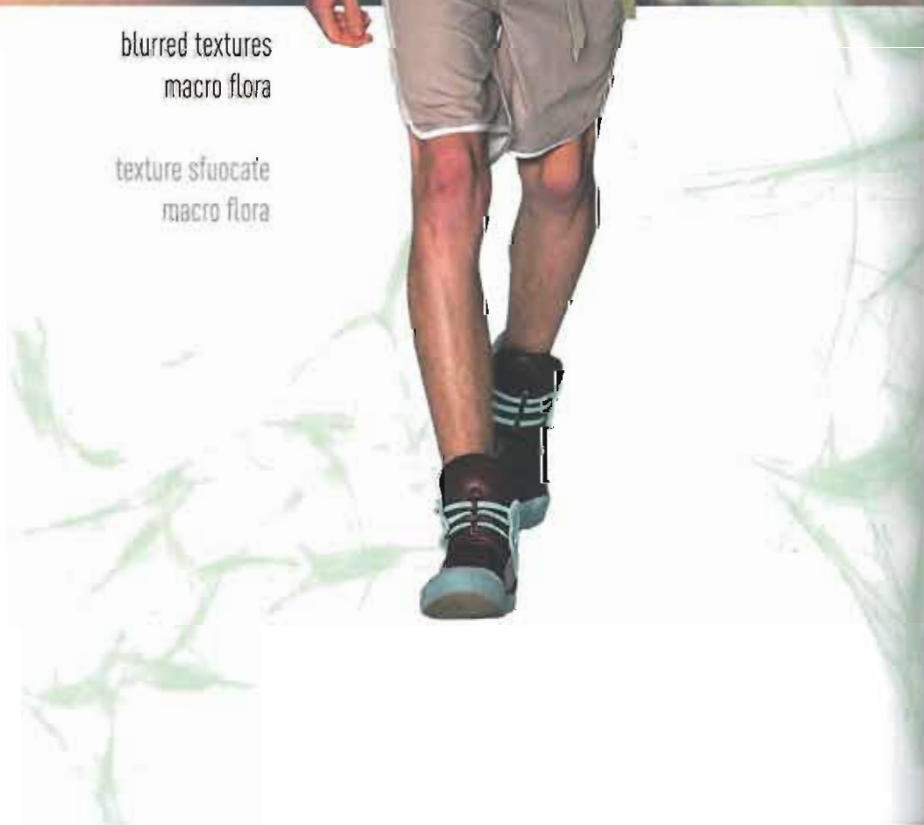




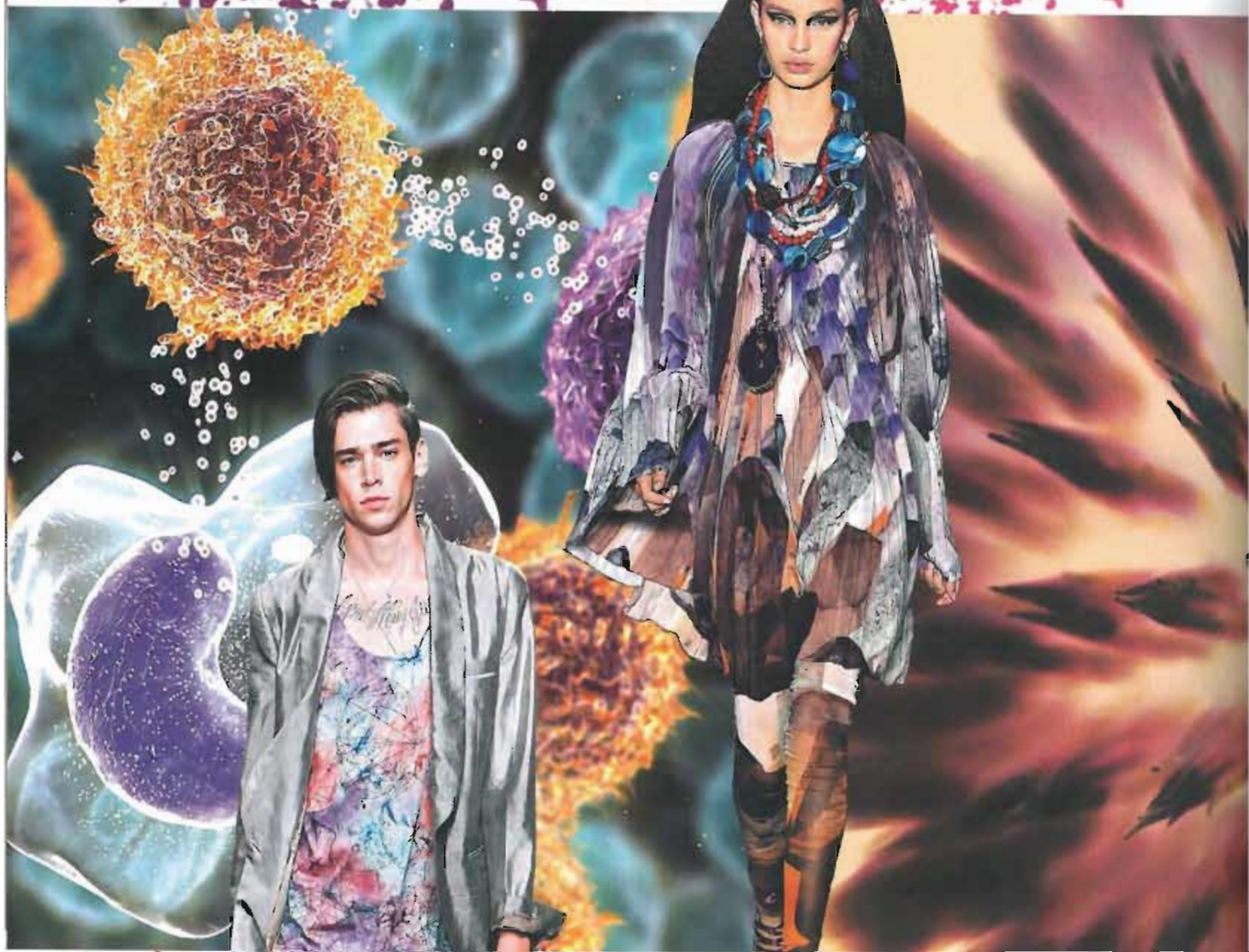
Paola Frani

blurred textures
macro flora

texture sfuocate
macro flora

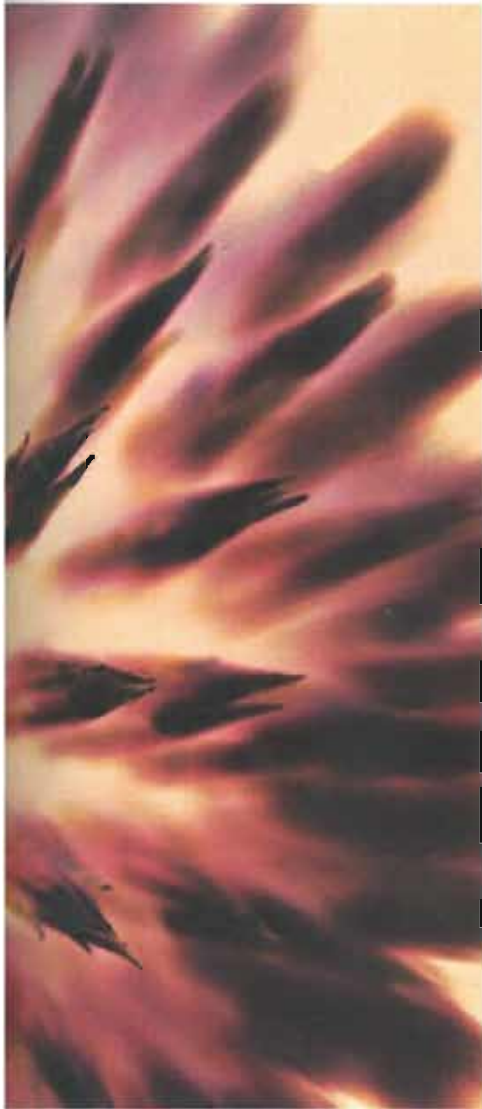




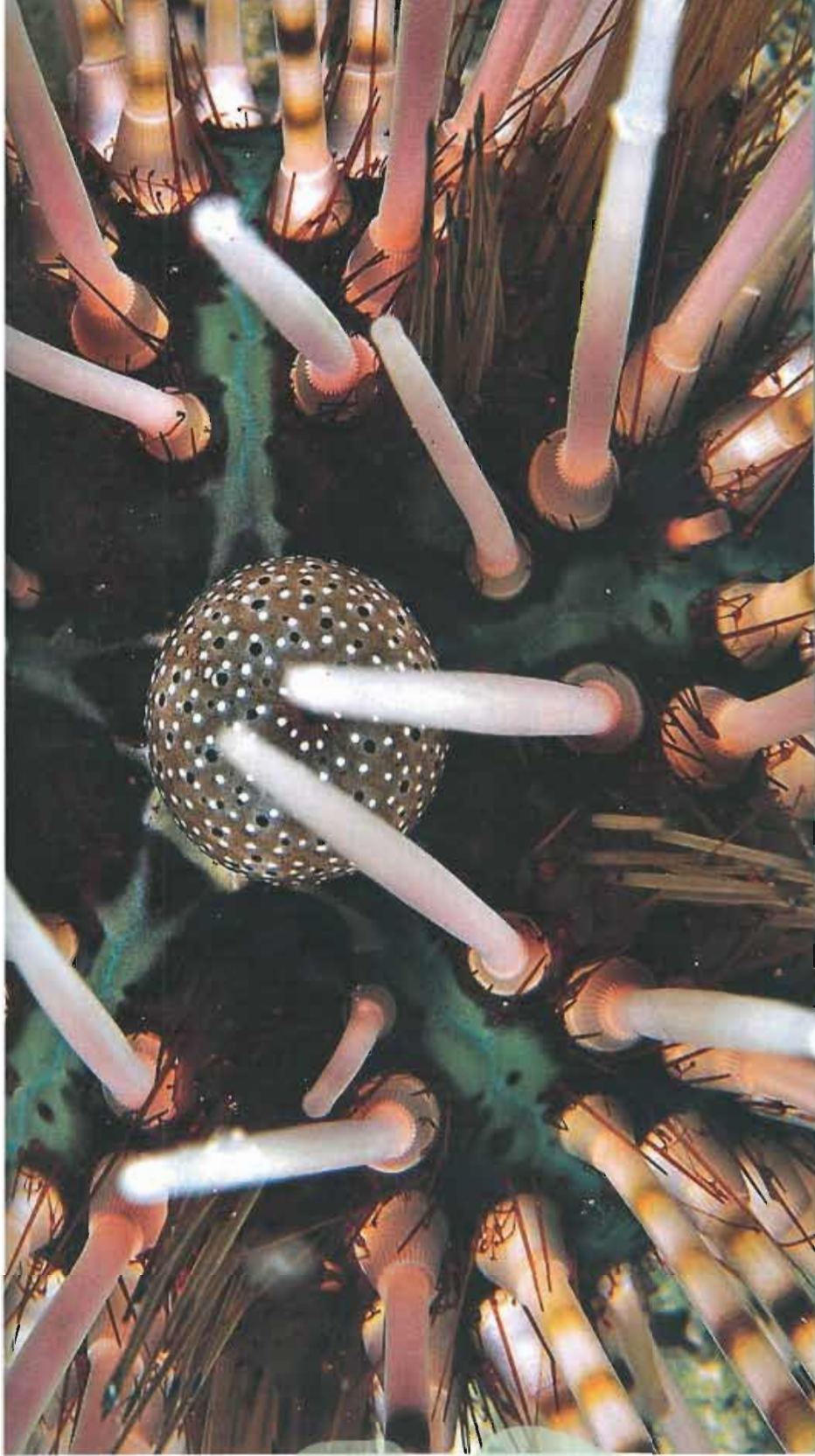


cellular universes
digital patterns

universi cellulari
fantasie digitali









chemical reflections
iridescent fabrics
dew-like appliquéés

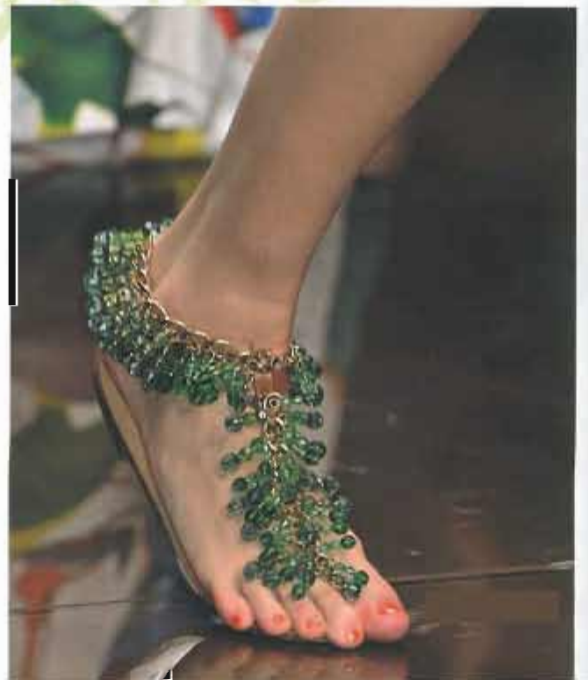
riflessi chimici
tessuti cangianti
applicazioni come rugiada



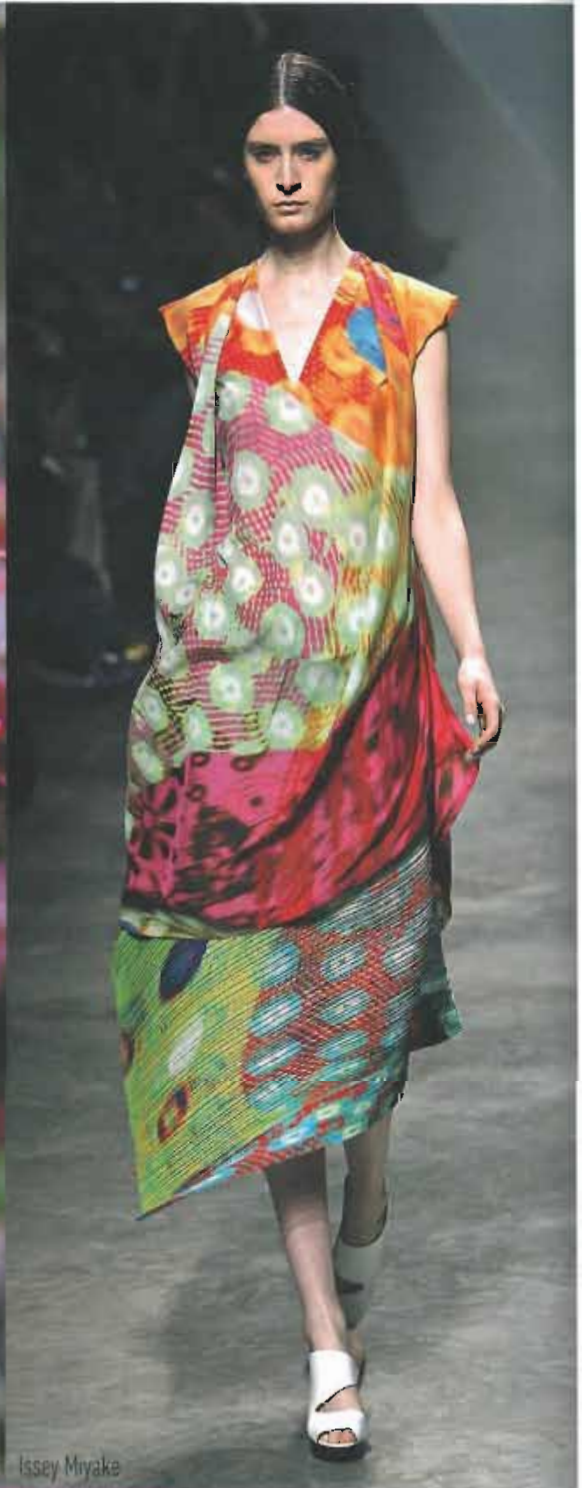


bio-pixels
wet effect
rubbery looks

bio-pixel
effetto bagnato
aspetti gommosi



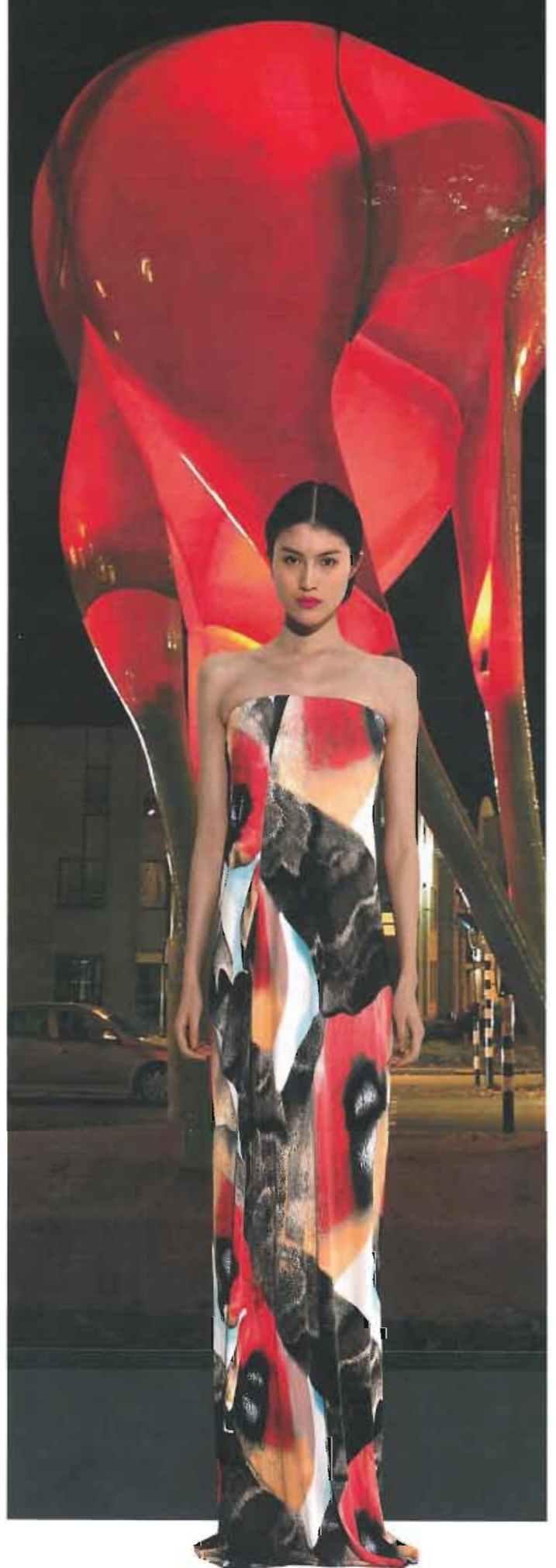
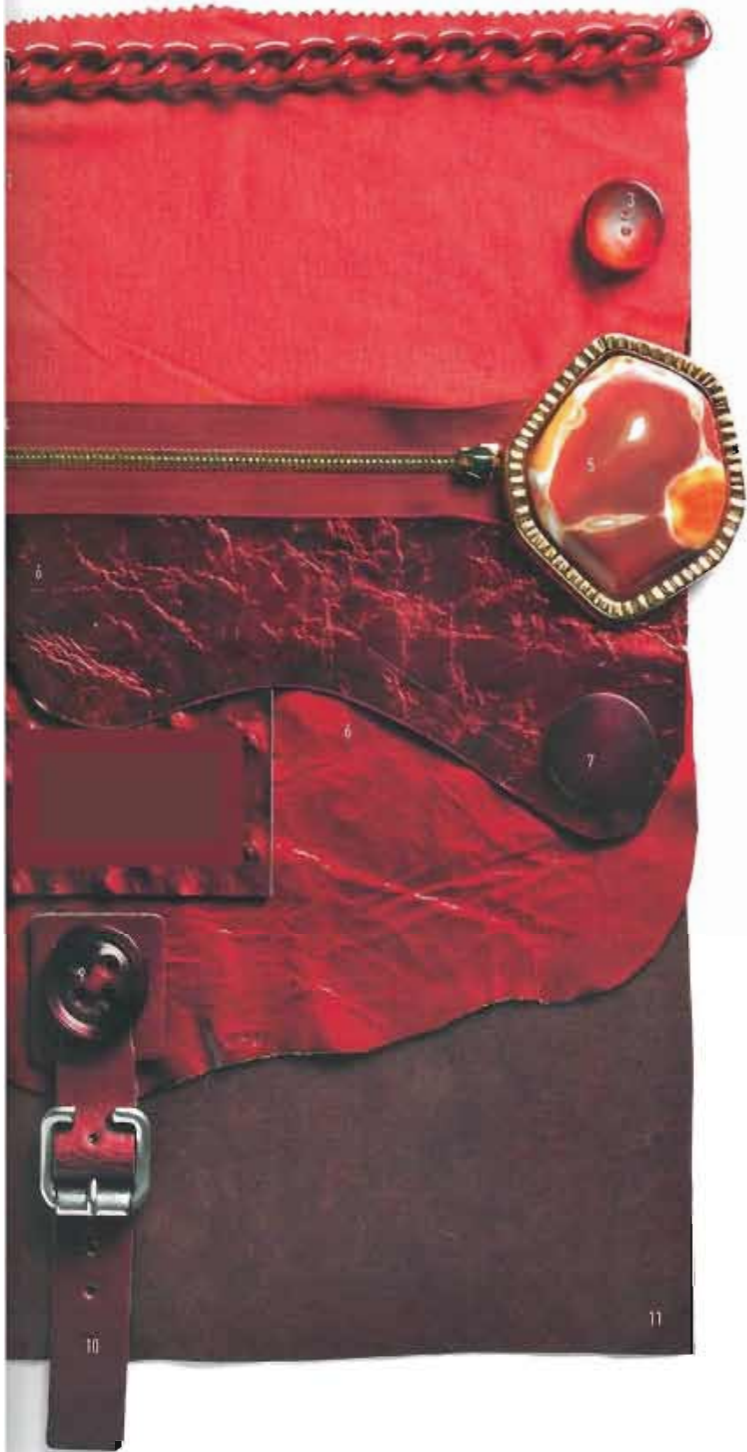
carnivorous plants piante carnivore
optical fibre fibre ottiche



Issey Miyake

floral architecture
shiny resin
patent
3D textures

architettura floreale
resina lucida
vernice
texture 3d





slimy surfaces superfici viscide
colourful shadows ombre colorate



underwater flora flora sottomarina
colour gradations gradazioni cromatiche
psychedelic landscapes paesaggi psichedelici

